

MELLING™

PERFORMANCE



2022 GM LS PARTS GUIDE



Melling Engine Parts got its start soon after World War II. In 1946, automakers devoted themselves to producing new vehicles. At that time, they were not concerned with providing service parts for older cars that were in desperate need of repair. George Melling Sr. and his son Ben operated a tool shop in Jackson, Michigan and they recognized the opportunity to provide high quality automotive aftermarket parts. George and Ben then focused on oil pumps manufactured with an attention to quality. Their first product that year was the M-10 for the 1937 6 cylinder Chevrolet. It sold well and they knew they needed to expand and make oil pumps for other engines.

By 1952 the line consisted of 20 oil pumps and 15 repair kits when the first high-volume oil pump was introduced making it a banner year for Melling Engine Parts. The high-volume oil pump was a Melling “brainchild” revolutionizing the automotive oil pump aftermarket. That same year Melling expanded its business horizons beyond oil pumps when it became the first nationally recognized aftermarket supplier to distribute new replacement camshafts. 70 years later Melling is still recognized as an industry leader in camshafts.

Today, after 75 years we are still family-owned and directed by the fourth generation of the Melling family. Melling has expanded its product offerings to thousands of aftermarket engine parts spanning 27 different product lines with a coverage of over 1 million applications. Being an original equipment supplier of engine parts to the automakers keeps us current on the latest product design and manufacturing technologies. Melling’s commitment to quality is verified by its ISO/TS 16949 quality certification.

The company has traveled a long road and paving the way has always been the Melling customer. Listening to the feedback from our customers has been one of the keys to our success. Success brought about by utilizing that information to provide innovative and economical solutions to the issues engine builders encounter.

The resulting product improvements have become vital when building a high performance LS engine for the track or a rebuilt engine for your daily driver. The following pages of this catalog focuses just on our high performance offerings for GM LS applications. Please refer to the Melling website for additional application information and tech videos covering a wide range of topics including installation instructions.

Thank you for the 75 years of loyalty you have given us. We are humbled by it and will continue to build on our tradition of supplying dependable performance engine parts.



MELLING GM LS VALVE SPRING KITS

Valve Spring Kit Number	Valve Spring Kit Contents				
	Spring/Qty	Retainer/Qty	Lock/Qty	Valve Seal/Qty	
VSK46652	466524 / 16	475264 / 16	VL-760 / 16 Pair	440014 / 8 (Intake)	440024 / 8 (Exhaust)
VSK46656	466564 / 16	475274 / 16	VL-760 / 16 Pair	440034 / 16	
VSK46659	466594 / 16	475274 / 16	VL-760 / 16 Pair	440034 / 16	
VSK46694	466944 / 16	475264 / 16	VL-760 / 16 Pair	440014 / 8 (Intake)	440024 / 8 (Exhaust)
VSK46673	466734 / 16	475274 / 16	VL-760 / 16 Pair	440034 / 16	
VSK461208	461208 / 16	475274 / 16	VL-760 / 16 Pair	440034 / 16	
VSK46694T	466944 / 16	475284 / 16	VL-760 / 16 Pair	440014 / 8 (Intake)	440024 / 8 (Exhaust)
VSK46652T	466524 / 16	475284 / 16	VL-760 / 16 Pair	440014 / 8 (Intake)	440024 / 8 (Exhaust)
VSK46656T	466564 / 16	475294 / 16	VL-760 / 16 Pair	440034 / 16	
VSK46659T	466594 / 16	475294 / 16	VL-760 / 16 Pair	440034 / 16	
VSK46673T	466734 / 16	475294 / 16	VL-760 / 16 Pair	440034 / 16	
VSK461208T	4612084 / 16	475294 / 16	VL-760 / 16 Pair	440034 / 16	
46652-16	466524 / 16	N/A	N/A	N/A	
46656-16	466564 / 16	N/A	N/A	N/A	
46659-16	466594 / 16	N/A	N/A	N/A	
46694-16	466944 / 16	N/A	N/A	N/A	
46673-16	466734 / 16	N/A	N/A	N/A	
461208-16	461208 / 16	N/A	N/A	N/A	



46656-16



VSK-46652T

Street rods, circle track and drag racing. Melling Performance valve spring kits will exceed your requirements. Standard, mid-range, heavy-duty and race ready applications are available from Melling Performance in a variety of wire sizes, materials, and spring pressures. Performance valve locks, seals, and retainers included are designed to increase performance and durability.

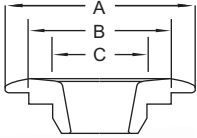
MELLING GM LS VALVE SPRINGS

Spring Number	Spring Type	O.D.	I.D.	Installed Load & Height		Open Load & Height		Spring Rate	Coil Bind	CR-Moly Retainer	Titanium Retainer
		Inch	Inch	lbs.	Inch	lbs.	Inch				
461208	Dual	1.324	.700	160 @ 1.800	482 @ 1.100	460	1.045	475274	475294		
466524	Beehive	1.264/1.029	.890/.665	130 @ 1.800	325 @ 1.200	325	1.146	475264	475284		
466564	Dual	1.268	.890	147 @ 1.800	406 @ 1.230	454	1.100	475274	475294		
466594	Dual	1.304	.670	151 @ 1.800	417 @ 1.150	409	1.080	475274	475294		
466734	Dual	1.295	.676	125 @ 1.800	370 @ 1.150	341	1.100	475274	475294		
466944	Beehive	1.307/1.072	.885/.650	145 @ 1.800	358 @ 1.175	340	1.100	475264	475284		



Street to circle track, OEM to drag race performance, Melling Performance valve springs cover the market and your requirements. Standard, mid-range, heavy-duty and race ready applications are available from Melling Performance in a variety of wire sizes, materials and spring pressures. Melling Performance spring designs include beehive and dual springs.

MELLING GM LS VALVE SPRING RETAINERS



Retainer Number	Valve Stem Size	Dim A	Dim B	Dim C	Material	Lock Degree	Spring Type
	Inch	Inch	Inch	Inch			
475234	8mm	1.039	.606	N/A	Chrome-Moly	7°	Beehive
475244	8mm	1.156	.950	.675	Chrome-Moly	7°	Dual + .050
475264	8mm	1.030	.640	N/A	Chrome-Moly	7°	Beehive
475274	8mm	1.240	.860	.610	Chrome-Moly	7°	Dual
475284	8mm	1.030	.640	N/A	Titanium	7°	Beehive
475294	8mm	1.240	.860	.610	Titanium	7°	Dual

*Refer to Melling Catalog for Application Information

The increased spring pressures required when using higher lift, high RPM performance camshafts make the engine valve spring retainers a critical piece of the valve train package. Melling Performance offers a variety of valve spring retainers to fit these demands. Whether you choose chrome-moly steel or lightweight titanium, you can be assured that you have chosen one of the best valve spring retainers available in the performance market today.

MELLING GM LS VALVE STEM SEALS



Seal Number	Description	Position
440014	OE Style; Premium Viton Seal Material	Intake
440024	OE Style; Premium Viton Seal Material	Exhaust
440034	OE Style; Designed For Dual Springs; Premium Viton Seal Material	Intake & Exhaust

*Refer to Melling Catalog for Application Information

Melling Performance valve stem oil seals provide reliable sealing under the harshest racing conditions. All Melling Performance valve stem oil seals are manufactured using the latest engineering technology to provide high quality and worry free performance while providing a perfect seal every time. Melling Performance valve stem oil seals are intended for GM LS applications 2002 and newer.

MELLING GM LS VALVE SPRING SEATS

Seat Number	O.D.	Locator I.D.	Thickness	Shoulder Height	Shoulder Diameter	Material	Type
	Inch	Inch	Inch	Inch	Inch		
478014	1.364	.570	.045	.220	1.367	Steel	Cup
478024	1.250	.570	.060	.135	.656	Steel	I.D. Locator
478034	1.250	.505	.060	.135	.656	Steel	I.D. Locator

*Refer to Melling Catalog for Application Information

When installing non OE style valve seals onto aluminum LS cylinder heads the use of steel spring seats are a must to protect the soft aluminum spring pocket. Melling Performance valve spring seats are manufactured from the highest quality heat treated material, which will ensure that your spring pockets remain free from damage.



MELLING GM LS VALVE SPRING SHIM SPECIFICATIONS



Shim Number	O.D.	Locator I.D.	Thickness	Material	Type
	Inch	Inch	Inch		
471060HP	1.246	.814	.015	Steel	Shim
473060HP	1.246	.814	.003	Steel	Shim
476060HP	1.246	.814	.006	Steel	Shim
471052HP	1.246	.518	.015	Steel	Shim
473052HP	1.246	.518	.003	Steel	Shim
476052HP	1.246	.518	.003	Steel	Shim



*Refer to Melling Catalog for Application Information

Valve spring shims can be a critical piece when trying to dial in your desired spring loads. Melling performance valve spring shims are manufactured from the highest quality heat treated materials ensuring a trouble free, accurate valve spring set up every time.

MELLING GM LS LIFTERS

Lifter Number	Type	Description
LS081RF16	Tie Bar / Hydraulic	Standard tie bar drop in, hydraulic lifter
LS083RF16	Tie Bar / Hydraulic	Standard tie bar drop in, hydraulic lifter
292110R	Drop In / Hydraulic	Premium drop in design lifter. Designed to be used with factory lifter trays
29ST2126LSR	Tie Bar / Hydraulic / Short Travel	Premium short travel axle oiling lifter. Designed for high horsepower and high RPM
292126LSR	Tie Bar / Hydraulic	Premium tie bar axle oiling

*Refer to Melling Catalog for Application Information



Melling Performance GM LS lifters are designed and built to get the job done while ensuring efficient performance and quiet valve train operation. Melling Performance GM LS lifters are manufactured from the finest materials thus ensuring long dependable lifter life.

MELLING GM LS PUSHRODS

Pushrod Number	Material	Length	Wall Thickness	Diameter	Construction
500704	Chrome-Moly	7.400	.080	.3125	1 Piece

*Refer to Melling Catalog for Application Information



Melling Performance GM LS push rods are built to the most stringent specifications using only the highest quality materials and manufacturing processes available. Melling Performance recommends always installing new push rods to ensure proper valve train geometry and worry free performance.

MELLING GM LS ROCKER ARMS

Rocker Arm Number	Description	Position
MR-1341	Improved OE Style; Full Rotation Trunnion	Intake & Exhaust
MR-1342	Improved OE Style; Full Rotation Trunnion	Intake

*Refer to Melling Catalog for Application Information



MR-1341
With Centered Rocker Arm Tip



MR-1342
With Offset Rocker Arm Tip

Melling Performance GM LS rocker arms are built from only the highest quality materials and manufacturing processes available. Melling Performance GM LS rocker arms feature an improved OE design ensuring worry free performance and long dependable rocker arm life.

- Cast Steel
- Bolt Mounted
- Self Aligning
- Anti-Rust Finish



GM LS PERFORMANCE SPEED SETS

Double Roller W/ Thrust Bearing; 9 Keyway

Timing Set Number	Description	Features
48561T-9	3 Bolt 1X Sensor Cam Sprocket	Billet Steel Cam Sprocket; Keyway Adjustable; Max 4° Advance/retard
48562T-9	3 Bolt 4X Cam Sprocket	Stainless Steel Cam Sprocket; Keyway Adjustable; Max 8° Advance/retard
48563T-9	3 Bolt 4X Cam Sprocket for 7.0L Engine	Stainless Steel Cam Sprocket; Keyway Adjustable; Max 8° Advance/retard
48565T-9	Single Bolt 4X Cam Sprocket	Stainless Steel Cam Sprocket; Keyway Adjustable; Max 8° Advance/retard

*Refer to Melling Catalog for Application Information



48561T-9



48562T-9



48563T-9



48565T-9



GM LS PERFORMANCE SPEED SETS

Single Roller W/ Thrust Bearing; 9 Keyway

Timing Set Number	Description	Features
48560T-9	3 Bolt 1X Sensor Cam Sprocket	Billet Steel Cam Sprocket; Keyway Adjustable; Max 4° Advance/retard
48564T-9	Single Bolt 4X Cam Sprocket	Stainless Steel Cam Sprocket; Keyway Adjustable; Max 8° Advance/retard
48570T-9	3 Bolt 4X Cam Sprocket	Stainless Steel Cam Sprocket; Keyway Adjustable; Max 8° Advance/retard
48571T-9	3 Bolt 4X Cam Sprocket for 7.0L Engine	Stainless Steel Cam Sprocket; Keyway Adjustable; Max 8° Advance/retard

*Refer to Melling Catalog for Application Information



48560T-9



48564T-9



48570T-9



48571T-9

Melling Performance timing chain kits provide an efficient and economical way to provide the timing components needed for your performance engine rebuild. Melling Performance timing chain options include silent, single or double roller chains matched with the high quality sprockets needed for the demands of street, strip and racing. Melling Performance chains and sprockets are manufactured from the highest quality materials.



GM LS CAMSHAFT BOLT LOCK PLATE

Part Number	Material	Thickness	Mounting Hole Diameter	Bolt Length	Bolt Thread Type
5461-LPK	Steel	.044	.340	1.393	Coarse

*Refer to Melling Catalog for Application Information

Melling Performance provides an aftermarket camshaft bolt lock plate kit for GM LS applications. Camshaft bolt and lock plate kits prevent the camshaft bolts from loosening and therefore preventing costly valve train and engine damage. Melling camshaft bolts and lock plates are manufactured to the most stringent specifications using only the highest quality materials and manufacturing processes to ensure maintenance free performance.



GM LS TIMING DAMPER KIT, BRACKET & DAMPER



BD417-DBRKT Damper Bracket Kit W/Damper



BD417-BRKT Damper Bracket Kit



BD417 Timing Chain Damper

Melling Performance offers a timing chain damper adapter bracket for the early GM LS engines. The adapter bracket is available by itself and is also available with the timing chain damper. The timing chain damper adapter bracket allows the use of LS2 timing chain dampers on any GM LS engine block. The bracket uses the 3 lower cam/thrust retainer plate bolts for attachment. The dampers are manufactured from OE-quality plastic and include mounting bolts. The timing chain damper adapter bracket is manufactured from high quality steel and is designed to provide long lasting worry free performance.

*Refer to Melling Catalog for Application Information



GM LS OIL PUMPS



Oil Pump Number	Description	Volume	Manf. Pressure	Optional Pressure 1	Optional Pressure 2
10294	Low volume, standard pressure. For aftermarket priority main oiling engine blocks	-15%	60 PSI	70 PSI (Red)	85 PSI (COPO)
10295	Standard volume, high pressure. For Gen 3 and some Gen 4 engines	Standard	70 PSI	60 PSI (Blue)	85 PSI (COPO)
10296	High volume, high pressure. For Gen 3 and some Gen 4 engines	+18%	70 PSI	60 PSI (Blue)	85 PSI (COPO)
10355	Standard volume, high pressure. For most but not all Gen 4 engines	Standard	70 PSI	60 PSI (Green)	80 PSI (Green)
10355HV	High volume, high pressure. For most but not all Gen 4 engines	+20%	70 PSI	60 PSI (Green)	80 PSI (Green)

*Refer to Melling Catalog for Application Information

*Oil pump pressure can vary due to engine clearances and modifications

*Pressure spring color



Melling high performance oil pumps provide dependable performance in every application under the toughest RPM conditions. Melling high performance oil pumps are CNC machined and hardcoat anodized. The cast iron covers are CNC machined and phosphate coated for improved pump performance and durability. The relief valves features a threaded plug with optional pressure relief springs included. The oil pump pickup tube o-rings are also supplied. Every Melling high performance oil pump is individually tested for pressure and flow ensuring superior performance every time.



ENGINE OIL PUMP PRIMING TANK



Part Number	Priming Tank Features
MPL-201	<ul style="list-style-type: none"> • Eliminates dry starts after engine rebuilds • Eliminates initial wear on engine components • Can be used on all internal combustion engines • Larger capacity 2 gallon stainless steel tank • Includes 3 adaptor fittings: 1/8 x 1/8 NPT • 1/4 x 1/8 NPT • 1.5 x 1/8 NPT • 75 lb. safety blow off valve • Built in handles for easy transport • 8 ft. chemical resistant hose with wand



The Melling Engine Oil Priming Tank was developed as a way for engine builders to safely pre-prime the engine with oil prior to initial engine startup. The priming tank, when filled with clean oil and air pressure will supply pressurized oil into all of the critical areas of the new engine quickly and safely.



GM LS OIL PUMP PICKUP TUBE SUPPORT BRACKET



Bracket Number	Length	Width	Thickness	Material
M29500	Inch	Inch	Inch	Aluminum
	1.370	1.355	.195	



*Refer to Melling Catalog for Application Information

Melling suggests that a new properly installed oil pump pick-up tube/screen be a part of every oil pump installation. For High Performance bolt on oil pump screen applications Melling offers additional oil pump screen support with an Engine Oil Pump Pickup Tube Support Bracket. This lightweight aluminum bolt on bracket provides added support for holding the oil pump screen in place during extreme high performance engine operation.

MELLING GM LS ENGINE PLUGS



Plug Number	Description	Contains
MPE-900BR	Brass Engine Plug Kit	(1) Expansion Plug, (4) Pipe Plugs
MPE-900BR-GP	Brass Engine Plug Kit w/ Oil galley Plug	(1) Oil Galley Plug, (1) Expansion Plug, (4) Pipe Plugs
MPE-901BR	Brass Head Plug Kit	(4) Expansion Plugs
MOGP-100	Oil Galley Plug Gen 3, Gen 4	(1) Oil Galley Plug
MOGP-200	Oil Galley Plug Gen 5	(1) Oil Galley plug

*Refer to Melling Catalog for Application Information

Melling GM LS engine block / cylinder head plug kits. Whether purchased individually, or as an entire engine kit, you can rest assured knowing that the components in these kits are manufactured using only the highest quality materials, ensuring a positive seal every time.



MELLING GM LS CAMSHAFT SPECIFICATIONS



Camshaft Number	Application	Camshaft Sprocket	Lift Int./Exh.	Duration @ .050 Int. / Exh.	Lobe Separation	RPM Range
MTC-7	Gen 3, Gen 4	3 Bolt / Non AFM	.515 / .522	206 / 212	112	Idle-5000
MTC-8	Gen 3, Gen 4	3 Bolt / Non AFM	.522 / .529	212 / 218	114	Idle-5000
22201	Gen 3, Gen 4	3 Bolt / Non AFM	.566 / .566	223 / 223	114	2000-5000
22205	Gen 3, Gen 4	3 Bolt / Non AFM	.585 / .585	228 / 230	112	2200-5500
22307	Gen 3, Gen 4	3 Bolt / Non AFM	.523 / .524	218 / 227	112	2000-5000
22309	Gen 3, Gen 4	3 Bolt / Non AFM	.560 / .560	216 / 220	112	2000-5000
22310	Gen 3, Gen 4	3 Bolt / Non AFM	.575 / .575	220 / 224	112	2000-5000
22411	Gen 3, Gen 4	3 Bolt / Non AFM	.525 / .525	225 / 236	110	2200-5500
22412	Gen 3, Gen 4	3 Bolt / Non AFM	.612 / .612	236 / 246	110	3200-6500
22413	Gen 3, Gen 4	3 Bolt / Non AFM	.551 / .551	229 / 240	108	2200-5500
22500	Gen 3, Gen 4	3 Bolt / Non AFM	.595 / .595	234 / 277	107	3200-6500
22414	Gen 5 LT1	1 Bolt / Non AFM	.577 / .577	228 / 248	116.5	2200-5400

*Refer to Melling Catalog for Application Information

Melling Performance offers specific high performance camshaft choices for street, RV, strip and circle track racing applications. Melling Performance camshafts are produced from high quality CNC ground billet steel camshaft cores. This material and processing provides tight toleranced, ultra-fine finished lobes and journals.



MELLING GM LS CAMSHAFT THRUST PLATE

Plate Number	I.D.	O.D.	Thickness	Material
	Inch	Inch	Inch	
MF127	1.679	4.980	.178	High Carbon Steel

*Refer to Melling Catalog for Application Information

LS engine camshaft thrust plates consist of a one time use oil gallery seal which is incorporated into the thrust plate. A new thrust plate should be installed anytime that it is removed to ensure a proper seal. Maintaining a positive seal will help to ensure proper oil pressure, and lifter bore lubrication.



MELLING GM LS CAMSHAFT GEAR INSTALLATION TOOL

Plate Number	Length	Thread Type	Thread Diameter	Bolt Grade
	Inch		Inch	
CSIT-LS	8.000	Coarse	0.550	12.9

*Refer to Melling Catalog for Application Information

Builders have found an issue when assembling the GM LS engines timing sets. Improper installation of the camshaft sprockets or phasers can damage or push the locating pin back into the camshaft during installation. As a result Melling has released the CSIT-LS installation tool which is designed to aid in the installation of both the camshaft and the camshaft sprocket or phaser. The CSIT-LS can be used with both single bolt and 3-bolt cams. The CSIT-LS installation tool is made from alloyed tool steel and heat treated for durability.



GM LS STOCK REPLACEMENT CAMSHAFTS

Displ.	Year	RPO	VIN	Gen	GM Camshaft	Camshaft Nose	Melling Stock Camshaft Number	Block Material	AFM	VVT	Application Information
4.8L	1999-07	LR4	V	III	12560967	3 Bolt	MC1383	Cast Iron			Silverado/Sierra, Tahoe/Yukon, 2003-07 Express/Savana vans
4.8L	2007-09	LY2	C	IV	12612274	1 Bolt	MC1390	Cast Iron			Silverado/Sierra, Tahoe/Yukon, 2008-09 Express/Savana vans
4.8L	2010-15	L20	A	IV	12612274	1 Bolt	MC1390	Cast Iron		X	Silverado/Sierra trucks, Express/Savana vans
5.3L	1999-07	LM7	T	III	12560967	3 Bolt	MC1383	Cast Iron			Silverado/Sierra, Suburban, Tahoe/Yukon, Yukon XL, 2002-2005 Escalade, 2002-2006 Avalanche, 2003-2007 Express/Savar
5.3L	2002-07	L59	Z	III	12560967	3 Bolt	MC1383	Cast Iron			Silverado/Sierra, Suburban, Tahoe/ Yukon, Yukon XL, 2005-06 Avalanche
5.3L	2003-04	LM4	P	III	12560967	3 Bolt	MC1383	Aluminum			TrailBlazer EXT, Envoy XL, Chevy SSR, Buick Rainier
5.3L	2005-07	L33	B	III	12583623	3 Bolt	N/A	Aluminum		X	Silverado/Sierra w extended cab, short box & 4X4
5.3L	2005-06	LH6	M	IV	12569525	3 Bolt	MC1391	Aluminum	X		Buick RainierCXL, 2005 Buick Rainier CXL Plus, Trailblazer LS & LT, Trailblazer EXT LS & LT, Envoy Denali XL & XUV
5.3L	2007-09	LH6	M	IV	12569525/12625436	3 Bolt	MC1391/MC1394	Aluminum	X		2007 Buick Rainier CXL, 2007-08 TrailBlazer Base, LS, LT, Envoy Denali, Silverado 1500 LT, LTZ, WT, Sierra 1500 SLE, SLT,WT
5.3L	2007-09	LY5	J	IV	12625436	1 Bolt	MC1394	Cast Iron	X		Silverado/Sierra, Suburban, Tahoe/Yukon, Yukon XL, Avalanche
5.3L	2008	LMF	4	IV	12612274	1 Bolt	MC1390	Cast Iron		X	Express/Savana vans
5.3L	2009	LMF	4	IV	12612274	1 Bolt	MC1390	Cast Iron		X	Express/Savana vans
5.3L	2010-14	LMF	4	IV	12612274	1 Bolt	MC1390	Cast Iron		X	Express/Savana vans
5.3L	2007-11	LC9	3	IV	12625436	1 Bolt	MC1394	Aluminum	X		Silverado/Sierra, Suburban, Yukon XL, Avalanche
5.3L	2012-14	LC9	7	IV	12625436	1 Bolt	MC1394	Aluminum	X		Silverado/Sierra, Suburban, Yukon XL, Avalanche
5.3L	2007-14	LMG	0	IV	12625436	1 Bolt	MC1394	Cast Iron	X		Flex Fuel - Silverado/Sierra, Suburban, Tahoe/Yukon, Yukon XL, Avalanche
5.3L	2010-12	LH9	P	IV	12612274	1 Bolt	MC1390	Aluminum		X	Colorado LT1 & LT2 & LT3/Canyon SLE & SLT
5.3L	2005-06	LS4	C	IV	12569525	3 Bolt	MC1391	Aluminum	X		2005-06 Pontiac Grand Prix GXP, 2006 Impala SS, 2006 Monte Carlo SS
5.3L	2007-09	LS4	C	IV	12625436	1 Bolt	MC1394	Aluminum	X		2007-08 Pontiac Grand Prix GXP, 2007-09 Impala SS, 2007 Monte Carlo SS, 2008-09 Buick LaCrosse Super
5.7L	1997-04	LS1	G	III	12561721	3 Bolt	MC1384	Aluminum			2003 Corvette 50th Edition, 2000-04 Corvette, 2000-02 Camaro Z28 /Z28 SS, 2000-02 Pontiac Firebird & 2004 GTO
5.7L	2001-05	LS6	S	III	12565308	3bolt	N/A	Aluminum			2001-2004 Corvette Z06, 2004-2005 Cadillac CTS V-Series
6.0L	1999-07	LQ4	U	III	12561721	3 Bolt	MC1384	Cast Iron			Silverado/Sierra, Suburban, Yukon, Hummer H2, Express/Savana
6.0L	2002-07	LQ9	N	III	12561721	3 Bolt	MC1384	Cast Iron			2002-2006 Escalade, Silverado SS, Silverado/Sierra
6.0L	2007-10	LY6	K	IV	12612274	1 Bolt	MC1393	Cast Iron		X	Silverado HD/Sierra HD, 2007-09 Suburban/Yukon XL, 2008-09 Express/Savana van
6.0L	2007-09	L76	Y	IV	12629698/12625438	1 Bolt	N/A	Aluminum	X	X	Silverado/Sierra, Suburban, Yukon XL, Avalanche, 2008-09 Pontiac G8 GT
6.0L	2005-09	LS2	H	IV	12574519/12593206	3bolt/1bolt	N/A	Aluminum			2005-06 Chevy SSR, 2006-09 TrailBlazer SS
6.0L	2005-07	LS2	U	IV	12574519/12593206	3 bolt/1bolt	N/A	Aluminum			2005-06 Pontiac GTO, 2005-07 Corvette, 2006-2007 Cadillac CTS-V
6.0L	2010-15	L96	G	IV	12626660	1 Bolt	MC1405	Cast Iron		X	Silverado HD/Sierra HD, Suburban, Yukon XL, Express/Savana van
6.0L	2011-15	LC8	B	IV	12626660	1 Bolt	MC1405	Cast Iron		X	Silverado/Sierra HD, Express/Savana van,
6.0L	2011-15	L77	2	IV	12625438	1 Bolt	MC1392	Aluminum	X		Caprice PPV
6.2L	2007	L92	8	IV	12612273	1 Bolt	MC1406	Aluminum	X	X	(1st Design up to 4/10/2006) Escalade, Yukon Denali,
6.2L	2007-08	L92	8	IV	12612273	1 Bolt	MC1406	Aluminum		X	(2nd Design after 4/10/2006) Escalade, Sierra Denali, Yukon Denali, Tahoe, Silverado
6.2L	2008-15	LS3	W	IV	12623063/12631811	1 Bolt	N/A	Aluminum			2010-2015 Camaro SS, 2014-15 Chevy SS, 2008-2013 Corvette, 2009 Pontiac G8 GXP
6.2L	2010-15	L99	J	IV	12623066	1 Bolt	N/A	Aluminum	X	X	Camaro SS (auto trans only)
6.2L	2009-13	L9H	2	IV	12711967	1 Bolt	N/A	Aluminum		X	Silverado/Sierra, Yukon XL, Escalade, Tahoe
6.2L	2010-14	L94	F	IV	12623066	1 Bolt	MC1426	Aluminum	X	X	Yukon Denali, Yukon XL Denali, Escalade ESV & EXT
6.2L	2009-15	LSA	P	IV	12623064	1 Bolt	N/A	Aluminum			Supercharged, Cadillac CTS-V, Camaro ZL1



GM GEN III AND GEN IV OIL PUMP APPLICATIONS

Displ.	Year	RPO	VIN	GM O/P Number	Melling O/P Number	Block Material	AFM	VVT	Application Information
4.8L	1999-07	LR4	V	12710303	M295	Cast Iron			Gen III, 1999-2006 Silverado/Sierra, Tahoe/Yukon, 2003-07 Express/Savana vans
4.8L	2007-09	LY2	C	12710303	M295	Cast Iron			Gen IV, Silverado/Sierra, Tahoe/Yukon, 2008-09 Express/Savana vans
4.8L	2010-14	L20	A	12710303	M295	Cast Iron		X	Gen IV, Express/Savana vans, 2010-13 Silverado/Sierra trucks,
4.8L	2015-17	L20	F	12710303	M295	Cast Iron		X	Gen IV, Express/Savana vans
5.3L	1999-07	LM7	T	12710303	M295	Cast Iron			Gen III, Silverado/Sierra, Suburban, Tahoe/Yukon, Yukon XL, 2002-05 Escalade, 2002-06 Avalanche, 2003-07 Express/Savana
5.3L	2002-07	L59	Z	12710303	M295	Cast Iron			Gen III, Silverado/Sierra, 2002-06 Suburban, 2002-06 Tahoe/ Yukon & Yukon XL, 2005-06 Avalanche, 2007 Express/Savana
5.3L	2003-04	LM4	P	12710303	M295	Aluminum			Gen III, TrailBlazer EXT, Envoy XL, Chevy SSR, Buick Rainier
5.3L	2005-07	L33	B	12710303	M295	Aluminum			Gen III, Silverado 1500/Sierra 1500
5.3L	2005-06	LH6	M	12693523	M355	Aluminum	X		Gen IV, Buick RainierCXL, 2005 Buick Rainier CXL Plus, Trailblazer LS & LT, Trailblazer EXT LS & LT, Envoy Denali XL & XUV
5.3L	2007-09	LH6	M	12710304	M365	Aluminum	X		Gen IV, 2007 Buick Rainier CXL, 2007-08 TrailBlazer, Silverado/Sierra, Envoy Denali
5.3L	2007-09	LY5	J	12710303	M295	Cast Iron	X		Gen IV, Silverado/Sierra, Suburban, Tahoe/Yukon, Yukon XL, Avalanche
5.3L	2008	LMF	4	12710303	M295	Cast Iron		X	Gen IV, Express/Savana vans
5.3L	2009	LMF	4	12710304	M365	Cast Iron		X	Gen IV, Express/Savana vans
5.3L	2010-14	LMF	4	12710303	M295	Cast Iron		X	Gen IV, Express/Savana vans
5.3L	2007-11	LC9	3	12710304	M365	Aluminum	X		Gen IV, Silverado/Sierra, Suburban, Avalanche, Yukon XL, 2009-11 Tahoe/Yukon
5.3L	2012-14	LC9	7	12710304	M365	Aluminum	X		Gen IV, Silverado/Sierra, Suburban, Yukon XL, Avalanche
5.3L	2007-14	LMG	0	12710303	M295	Cast Iron	X		Gen IV, Flex Fuel - Silverado/Sierra, Suburban, Tahoe/Yukon, Yukon XL, Avalanche
5.3L	2010-12	LH9	P	12710304	M365	Aluminum		X	Gen IV, Colorado, Canyon
5.3L	2005-06	LS4	C	12693523	M355	Aluminum	X		Gen IV, 2005-06 Pontiac Grand Prix GXP, 2006 Impala SS, 2006 Monte Carlo SS
5.3L	2007-09	LS4	C	12710304	M365	Aluminum	X		Gen IV, 2007-08 Pontiac Grand Prix GXP, 2007-09 Impala SS, 2007 Monte Carlo SS, 2008-09 Buick LaCrosse Super
5.7L	1997-04	LS1	G	12710303	M295	Aluminum			Gen III, 1997-04 Corvette, 1998-02 Camaro Z28 /Z28 SS, 1998-02 Pontiac Firebird & 2004 GTO
5.7L	2001-05	LS6	S	12710303	M295	Aluminum			Gen III, 2001-04 Corvette Z06, 2004-05 Cadillac CTS V-Series
6.0L	1999-07	LQ4	U	12710303	M295	Cast Iron			Gen III, Silverado/Sierra, Suburban, Yukon, Hummer H2, 2003-07 Express/Savana
6.0L	2002-07	LQ9	N	12710303	M295	Cast Iron			Gen III, 2003-07 Silverado, 2005-07 Sierra, 2002-06 Escalade
6.0L	2007-10	LY6	K	12710303	M295	Cast Iron		X	Gen IV, Silverado HD/Sierra HD, 2007-09 Suburban/Yukon XL, 2008-09 Express/Savana van
6.0L	2007-09	L76	Y	12710304	M365	Aluminum	X	X	Gen IV, Silverado/Sierra, Suburban, Yukon XL, Avalanche, 2008-09 Pontiac G8 GT
6.0L	2005-09	LS2	H	12710303	M295	Aluminum			Gen IV, 2005-06 Chevy SSR, 2006-09 TrailBlazer SS
6.0L	2005-07	LS2	U	12710303	M295	Aluminum			Gen IV, 2005-06 Pontiac GTO, 2005-07 Corvette, 2006-07 Cadillac CTS-V
6.0L	2010-20	L96	G	12710303	M295	Cast Iron		X	Gen IV, Express/Savana van, 2010-19 Silverado HD/Sierra HD, 2010-13 Yukon XL, Suburban 2500, 2016-19 Suburban 3500 HD
6.0L	2011-20	LC8	B	12710303	M295	Cast Iron		X	Gen IV, Express/Savana van, 2013-19 Silverado/Sierra HD
6.0L	2011-17	L77	2	12710304	M365	Aluminum	X		Gen IV, Caprice PPV
6.2L	2007	L92	8	12710304	M365	Aluminum	X	X	Gen IV, (1st Design up to 4/10/2006) Escalade, Yukon Denali
6.2L	2007-08	L92	8	12710304	M365	Aluminum		X	Gen IV, (2nd Design after 4/10/2006) Escalade, Sierra Denali, Yukon Denali, Tahoe, Silverado
6.2L	2008-17	LS3	W	12710303	M295	Aluminum			Gen IV, 2008-13 Corvette, 2010-15 Camaro SS, 2014-17 Chevy SS, 2009 Pontiac G8 GXP
6.2L	2010-15	L99	J	12710304	M365	Aluminum	X	X	Gen IV, Camaro SS
6.2L	2009-13	L9H	2	12710304	M365	Aluminum		X	Gen IV, Silverado/Sierra, Yukon XL, Escalade, Tahoe
6.2L	2010-14	L94	F	12710304	M365	Aluminum	X	X	Gen IV, Yukon Denali, Yukon XL Denali, Escalade ESV & EXT
6.2L	2009-15	LSA	P	12710304	M365	Aluminum			Gen IV, Supercharged, Cadillac CTS-V, Camaro ZL1

Interchange

GM O/P	Melling O/P	DISPL. (cuin/rev)	PRV (psi)	
12710303	M295	0.96	37	Supercedes 1269357, 12678151, 12586665, 12606311, 12563964, 12674648
17801830	M295	0.96	37	Stock volume, stock pressure pump available through GM Performance (No change from stock pump)
12693523	M355	1.28	63	Supercedes 12571885, 12596274
12710340	M365	1.28	53	Supercedes 12612289
N/A	M295HV	1.14	47	High volume, high pressure pump
N/A	M365HV	1.53	63	High volume, high pressure performance pump

Interchange (continued)

GM O/P	Melling O/P	DISPL. (cuin/rev)	PRV (psi)	
N/A	10295	0.96	47	Stock volume, high pressure performance pump
19301144	10295	0.96	57	Use optional plain spring to increase pressure +10psi (=25 psi over GM 12586665) COPO Camaro
N/A	10296	1.14	47	High volume, high pressure performance pump
N/A	10355	1.28	63	Stock volume, high pressure performance pump
N/A	10355HV	1.53	63	High volume, high pressure performance pump

www.melling.com

- Check out digital versions of our condensed catalogs focusing on the GM LS, Ford Modular, and Chrysler Hemi V8 applications.
- In addition you can also download catalogs focusing on performance valve springs, heavy duty valve springs and water pumps.
- Don't forget to check out the Melling tech video library covering a wide range of topics including detailed installation instructions.

MELLING
PERFORMANCE

75th Anniversary

2021 **NEW PRODUCTS ADDED!**

Ford Modular Engines
(Mercury/Lincoln) 4.6L, 5.0L, 5.4L, 6.2L & 6.8L

MELLING
PERFORMANCE
2620 Saradan Drive
Jackson, MI 49204
517-787-8172
www.melling.com

MELLING
PERFORMANCE

75th Anniversary

Dodge HEMI Engines
(Chrysler) 5.7L, 6.1L & 6.4L

MELLING
PERFORMANCE
2620 Saradan Drive
Jackson, MI 49204
517-787-8172
www.melling.com

MELLING
PERFORMANCE

GM LS

2022 GM LS PARTS GUIDE

MELLING
ENGINE PARTS

2022 HEAVY DUTY VALVE SPRING GUIDE

2620 Saradan Dr. • Jackson, MI 49202 • 800-777-8172 • melling.com

INTRODUCING A NEW LINE OF HEAVY DUTY VALVE SPRING PRODUCTS!

MELLING
PERFORMANCE

2021 VALVE SPRING GUIDE

2620 Saradan Dr. • Jackson, MI 49202 • 800-777-8172 • melling.com

INTRODUCING A NEW LINE OF VALVE SPRING PRODUCTS!

75th Anniversary **MELLING** ENGINE PARTS

WATER PUMPS

Melling stock replacement water pumps are intended for customers who demand best in class dependability and durability.

2021

MELLING ENGINE PARTS
2620 Saradan Drive
Jackson, MI 49204
517-787-8172
www.melling.com

LATE

OEM
Original Equipment Supplier



POWERING PERFORMANCE ENGINES FOR OVER 75 YEARS

Since 1946 when George Melling Sr. and his son Ben started Melling Tool Company in Jackson, Michigan, the Melling brand has been recognized as a leader in supplying quality parts to the engine building industry.

More than 75 years later, demand for Melling products is stronger than ever and widely preferred by professionals in markets around the world. From those first products shipped three generations ago to our now extensive portfolio of world class automotive solutions, Melling has given customers multiple reasons to prefer one brand and one standard of quality and performance

Melling Performance offers these quality product lines:

- Oil Pumps - Cast Iron, Aluminum and Billet Aluminum
- Oil Pump Pick-up Screens and Pick Up Tube Support Brackets
- Camshafts
- Timing Chain Speed Sets
- Valve Train Kits and Components
- Cylinder Sleeves
- Speciality Items and Installation Tools

On behalf of Melling Performance, thank you for your continued support for over 75 years.

Melling Engine Parts are manufactured with key advantages. Each part is backed by resources, technologies and people who are the very best in the world at designing, manufacturing and building exceptional products. Melling Performance parts deliver "An Advantage by Design".